

Standard Lite Mouldings

Appendix A

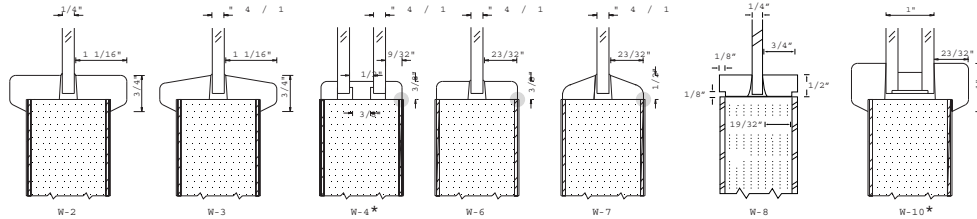
Marshfield Signature Series®

Lite mouldings are installed on one side and the other side is precut for field installation after glazing. Mouldings are set for 1/4" glass or upon request for different glass thickness. Marshfield DoorSystems will factory glaze upon request.

Lite mouldings are installed on one side and the other side is precut for field installation after glazing.

Wood Lite Kits for Non-Rated and 20-Minute Rated Doors

Glazing compound/caulking must be used when installing glass.



ITS-WH and UL approved with 1/4" wired glass only and W-2, W-3, W-6, or W-7 True divided lites are available on non-rated doors using a 1/2" wide divider bar and W-2, W-3, W-6 or W-7 profiles.

- Downset may vary due to allowable tolerance deviations in components.
- 1/4" lip on face on W-2, W-3, W-10

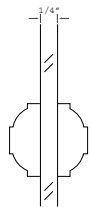
* Not available as 20-Minute Rated

Field Glazing Instructions for Non-Labeled and 20-Minute Rated Marshfield DoorSystems doors

- Apply a 1/8" to 1/4" bead of DAP Alex Plus Acrylic Latex Caulk Plus Silicone in the corner made by the glass and the door core. This bead should be applied on both sides.
- Moulding should be installed with 16 gauge 2" finish nails. Nails should be placed 3" from the end of each moulding piece and at 6" intervals thereafter.

Classic Grilles™ Removable Grill Work With Fire Ratings up to 90-Minutes

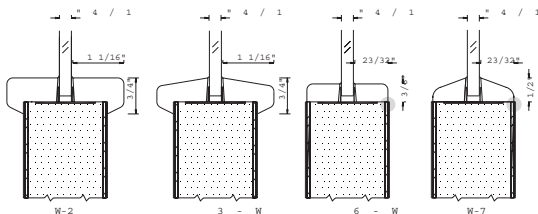
Only available with flat profiled mouldings: W-2, W-6, W-8.



Classic Grilles are an option to the Signature Series product offering. Classic Grilles are removable grill work that has fire-ratings up to 90-minutes. Classic Grilles feature a dual-lock adhesive that acts as a velcro type material allowing the grilles to be easily removed for cleaning. Available in a variety of species. Classic Grilles need to be installed in the field or can be factory installed when doors are glazed.

- Factory finished doors with applied mouldings, louvers or factory glazed lites will have nail holes filled.
- Doors to be glazed in the field will not have nail holes filled, even if the doors are factory finished.

Canada Trim-Lite™ Moulding for 20-Minute Rated Doors Requiring Hose Stream Caulking required.

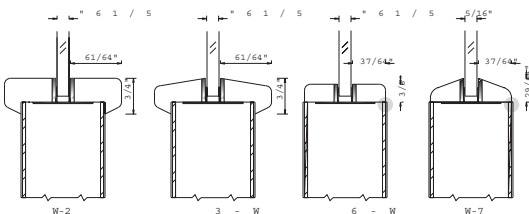


ITS-WH and UL approved with 1/4" wired glass only. Trim-Lite™ is only required on doors shipping to Canada or any Jurisdiction that requires hose stream testing.

- Downset may vary due to allowable tolerance deviations in components.

Note: For more information on lite kits to be used with other glazing materials for rated and non-rated doors, please contact Marshfield DoorSystems Sales & Service Center.

Wood Fire-Trim System for 20-Minute Rated Doors.



Fire-Trim lite mouldings are for use with 20-minute positive pressure doors and structural composite lumber core neutral pressure doors. Fire-Trim lite mouldings are set for 5/16" FireLite® Plus glass thickness. Marshfield DoorSystems will factory glaze upon request.

ITS-WH and UL approved with 5/16" FireLite® Plus glass only.

- Downset may vary due to allowable tolerance deviations in

The mark of excellence™

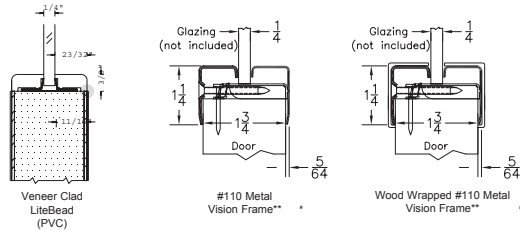
Note: Marshfield DoorSystems doors are manufactured per the standards listed on this page. Specifications are subject to change without notice.

For more information call: 800-869-3667
©2005 Marshfield DoorSystems, Inc.

Marshfield
DoorSystems

Veneer Clad, Wood Wrapped or Metal Lite Kits for 90, 60 and 45-Minute Rated Doors

Metacaulk caulking required for veneer clad lites over 100 sq. in. (Metacaulk supplied by Marshfield DoorSystems)



- #117 or #118M Metal Vision Frame available for doors with glass thickness other than 1/4" or doors other than 1-3/4" thick.
- Anemostat LO-FP frames available for circle lites.

ITS-WH and UL approved with 1/4" wired glass only.

● Downset may vary due to allowable tolerance deviations in components.

**available in 1" increments only

Marshfield DoorSystems does not assume responsibility for the choice of glazing materials used. Refer to consumer Product Safety Commission 16 CFR 1201 CAT. II (1-1-97 Edition) to determine the need for safety-rated glazing.

The mark of excellence™



Note: Marshfield DoorSystems doors are manufactured per the standards listed on this page. Specifications are subject to change without notice.